

Color Calibration Scale System

For

Color Correcting Photographs

It's Simple, Easy and Fun

Color Calibration Scale System –
For Color Correcting Photographs

This is a simple device that I made up that performs Two (2) separate and distinct functions.

- A. It is a known and recognized measuring device
- B. It is a known and recognized color grading device

Forensic Scientists commonly use and place known measuring devices and scales within their photographs to provide a known and recognized size and scale relationship to what they are photographing.

This is only an example of what you can do

DO NOT USE & PRINT THIS OUT as the scale is slightly off

You can easily design such a Color Calibration Scale using any type of drawing software

The point is you can design and use it yourself if you color correct your photographs for both Color and White Balance.

*****Very Important*****

However, you still need to list a limiting condition within your reports stating that the photographs should not be used to grade or judge color, Hue, Tone and Saturation Levels and printed and or digital photos will not have the same color representation as the real actual item.

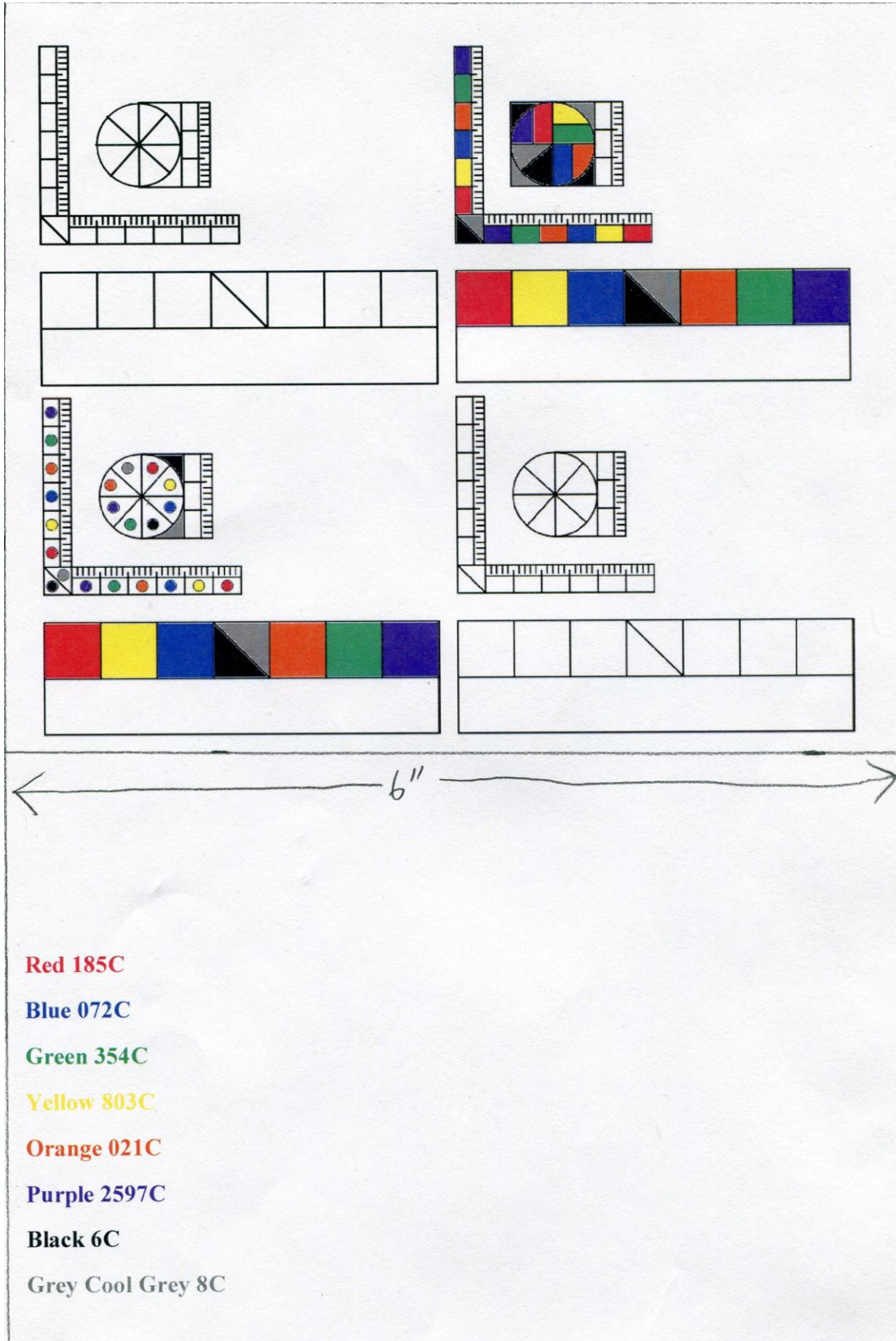
You can place the Color Calibration Scale close to or slightly away from the item so you can easily crop the scale out of your finished corrected file before placing it in your report or you can include the Color Calibration Scale in the corrected digital photo to show approximate scale size representation.

I picked out known colors, Hue, Tone and Saturation as listed using the Pantone Color Designations

Once I drafted up the measuring scales and colored them in I then printed them and carefully cut them out and I make several sets and keep the spare sets in a specially marked envelope so when the scales I use get dirty and worn I have another set that was made at the same time so the color representation will be as close as possible.

The larger color scale I use up against my LED Laptop monitor to try to match the hue, tone and saturation levels.

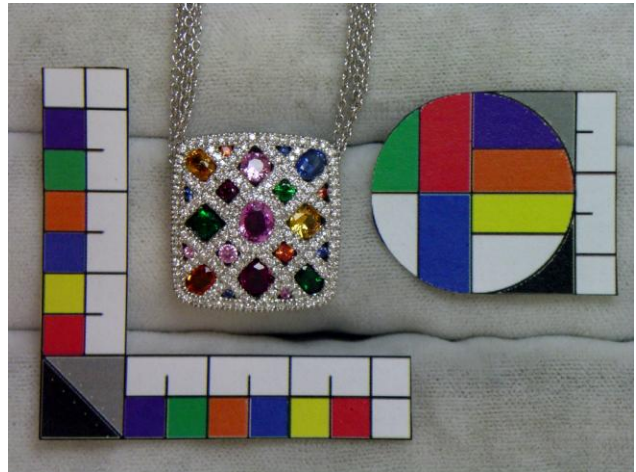
Color Calibration Scale System –
For Color Correcting Photographs



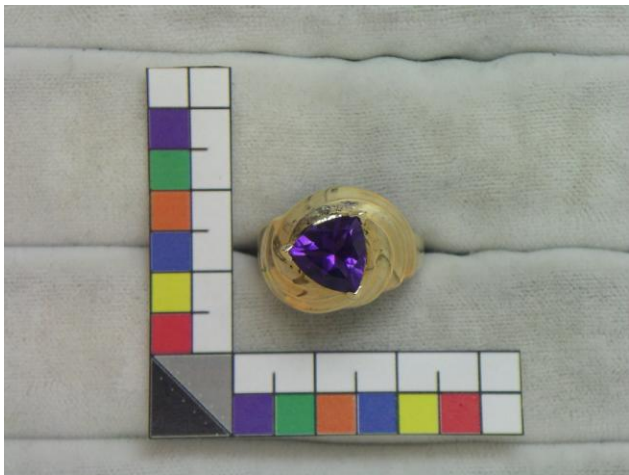
Color Calibration Scale System –
For Color Correcting Photographs



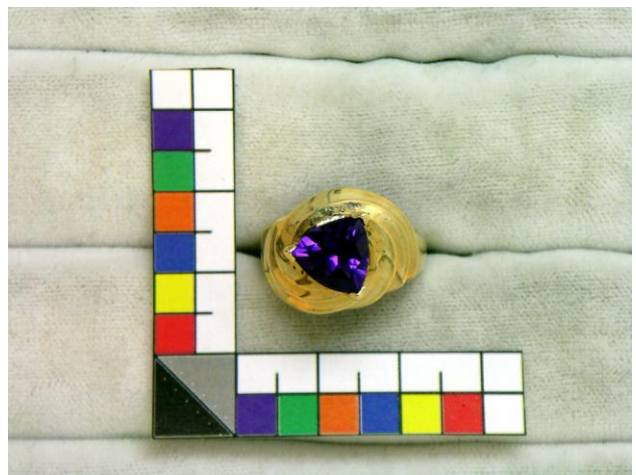
Raw Untouched Photo



Auto Color Corrected by my software program



Raw Untouched Photo



Color Corrected

For demonstrations purposes and to also save myself a lot of time I simply used the digital software's auto correction instead of individually using the more advanced white balance and other various levels of individual adjustments.

Once again it is my own opinion that for the most part we as Professional Appraisers of Gems & Jewelry are merely documenting the object and are not out to win an awards for the best photograph.

To me time is money. We are not selling the piece we are merely appraising and documenting the known and recognized attributes associated with the item we are appraising.

Color Calibration Scale System –
For Color Correcting Photographs



Raw Untouched Photo



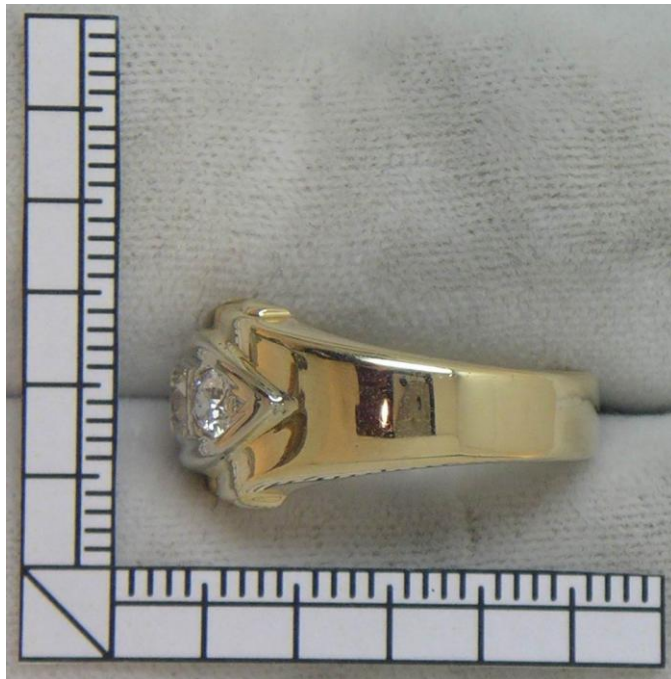
Color Corrected

As you can clearly see in these photos the Small hash marks and small Individually colored squares represent 5.0mm

This was my first proto-type design. Very crude and basic

Do you also notice that I reversed the color scales from the vertical to horizontal?
I did this for a very specific reason.
I also included a Black and Gray Scale as well as a known White Scale

Color Calibration Scale System –
For Color Correcting Photographs



This is a simple measuring scale with 1.0mm hash marks
I use the white scale when photographing just diamond jewelry with no colored stones so as not to detract from the object I am documenting.

Color Calibration Scale System –
For Color Correcting Photographs



Here I used a Circle Calibration Scale instead of a Square Style Ruler

The circle has a diameter of 25.0 millimeters which is approximately 1 inch or close to it

Color Calibration Scale System –
For Color Correcting Photographs



Here I made my calibration scale using small colored circles 2.0mm in diameter so the color would not be so obtrusive and detracting from the item I was photographing and documenting.

The possibilities are endless as to what your imagination can up with to help you tackle a unique problem and/or task.

Hope you all enjoyed this short demonstration of what you can design to help you do and perform a better more professional job and produce a superior work product.

Color Calibration Scale System –
For Color Correcting Photographs

Notes: